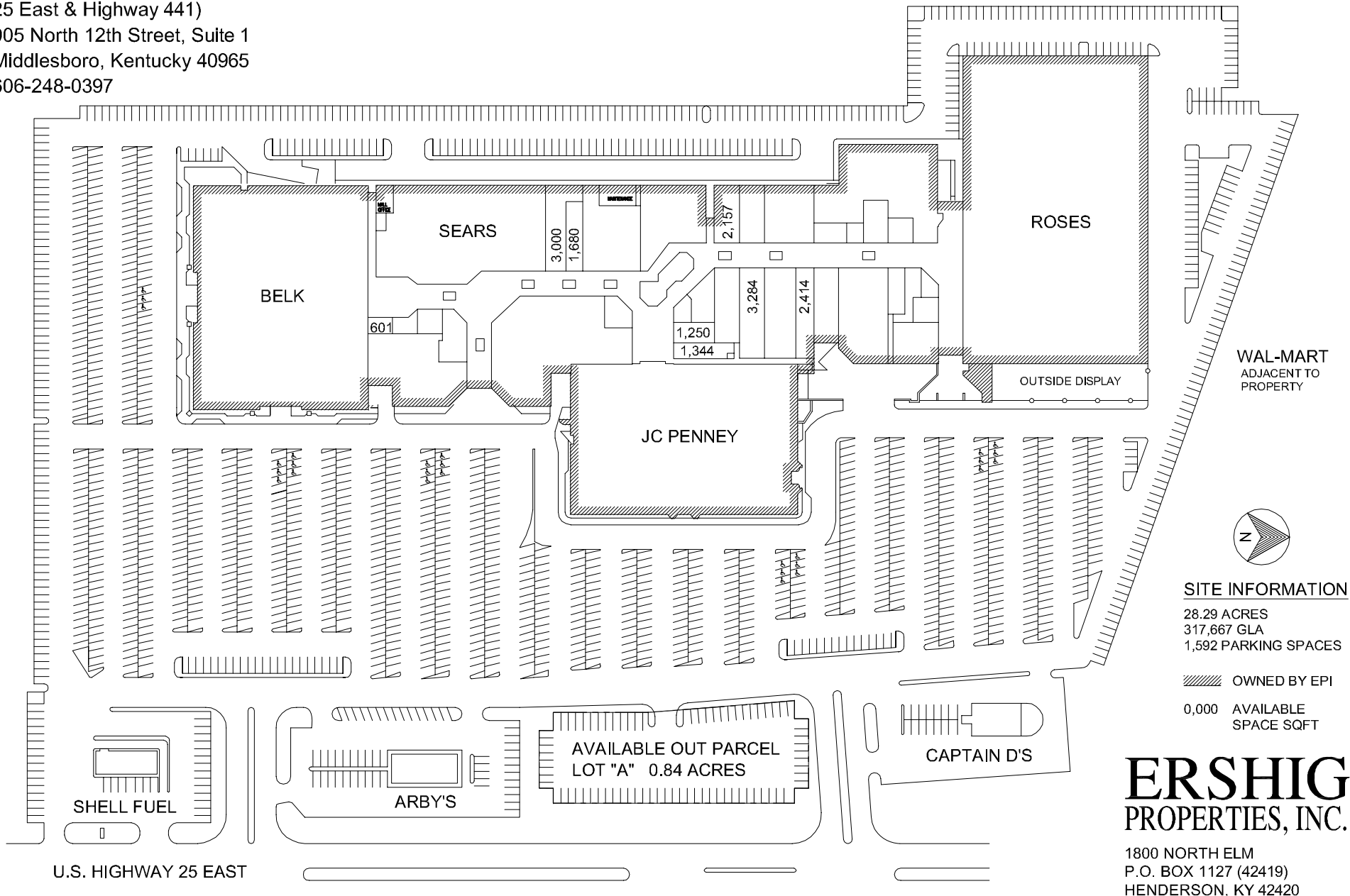


(Intersection of U.S. Highway  
25 East & Highway 441)  
905 North 12th Street, Suite 1  
Middlesboro, Kentucky 40965  
606-248-0397



**SITE INFORMATION**

28.29 ACRES  
317,667 GLA  
1,592 PARKING SPACES

OWNED BY EPI  
0,000 AVAILABLE SPACE SQFT

**ERSHIG**  
PROPERTIES, INC.

1800 NORTH ELM  
P.O. BOX 1127 (42419)  
HENDERSON, KY 42420  
www.ershigproperties.com  
PHONE: 270-826-0595 FAX: 270-827-3969