



ERSHIG
PROPERTIES, INC.

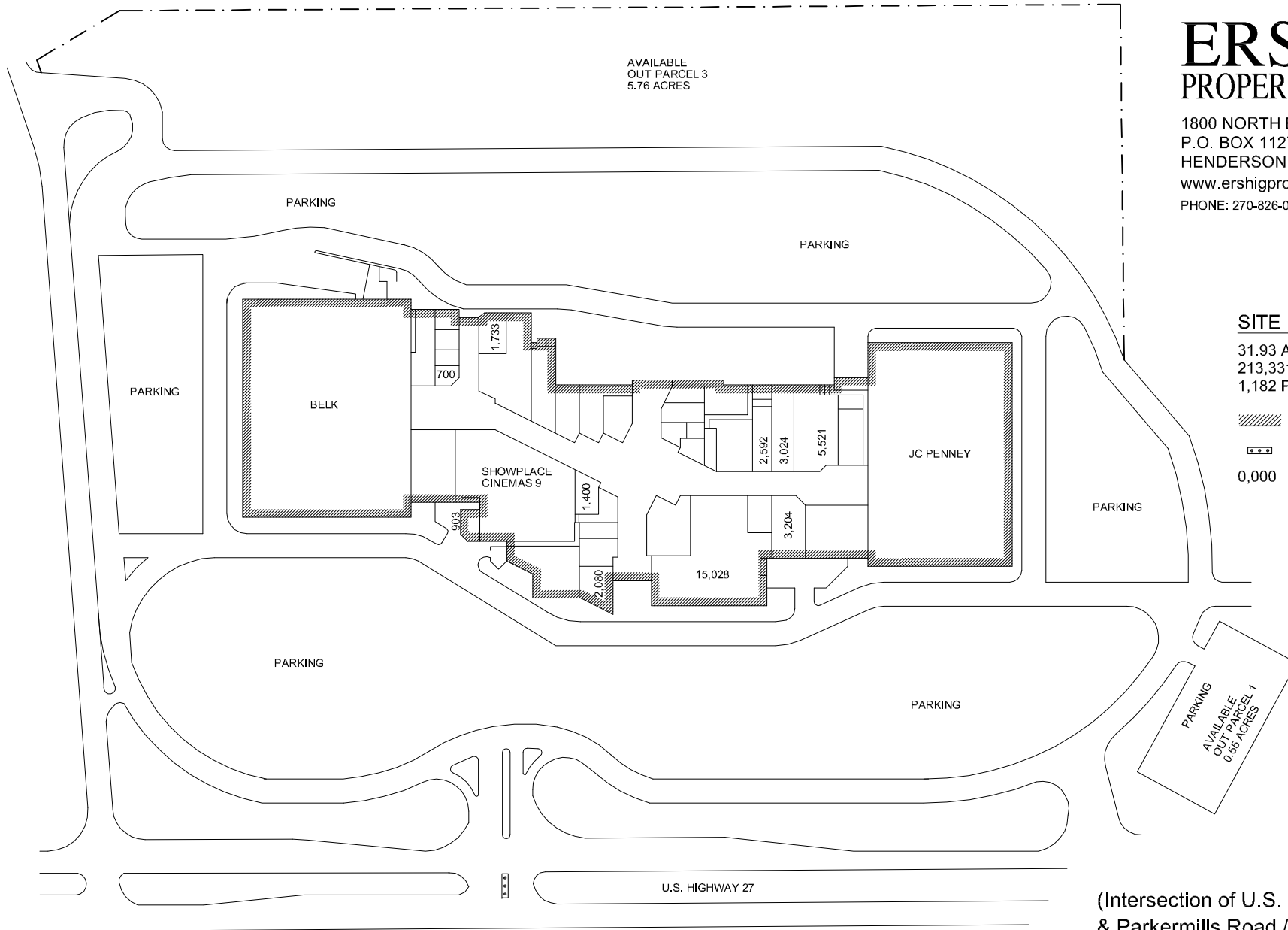
1800 NORTH ELM
P.O. BOX 1127 (42419)
HENDERSON, KY 42420
www.ershigproperties.com
PHONE: 270-826-0595 FAX: 270-827-3969



SITE INFORMATION

31.93 ACRES
213,331 GLA
1,182 PARKING SPACES

-  OWNED BY EPI
-  TRAFFIC SIGNAL
- 0,000 AVAILABLE SPACE SQFT



(Intersection of U.S. Highway 27
& Parkermills Road / Highway 1642)
4150 South Highway 27
Somerset, Kentucky 42501
606-678-4157